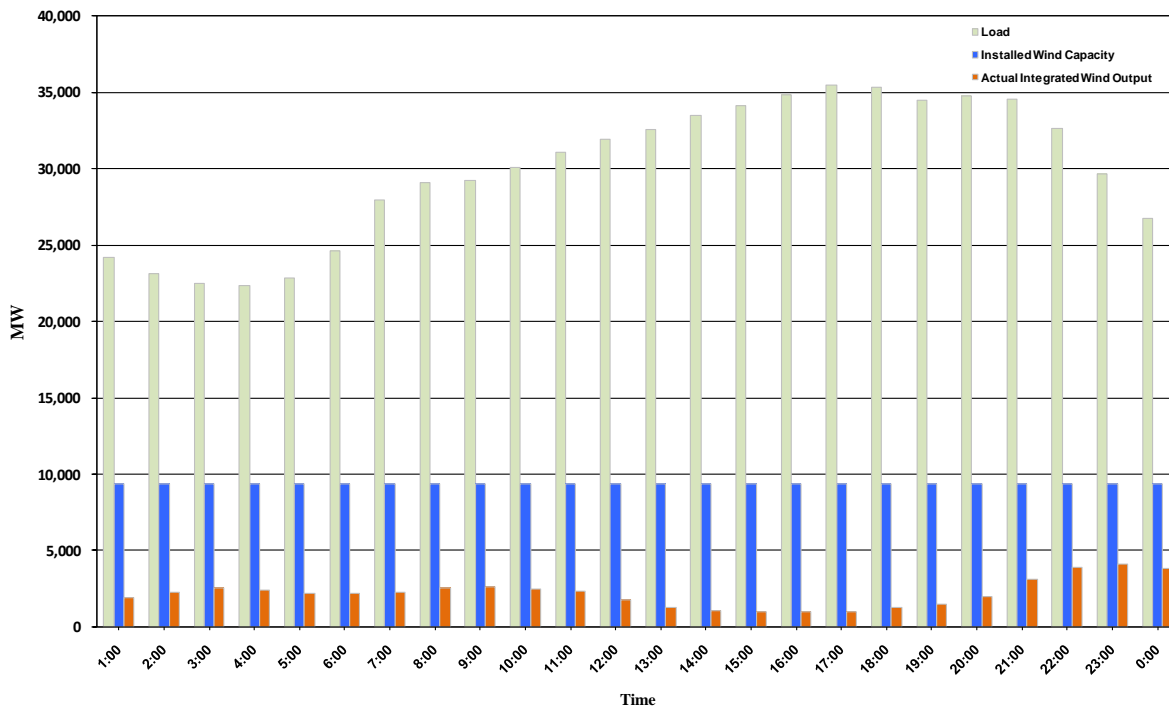




ERCOT Grid Operations Wind Integration Report: 10/04/10

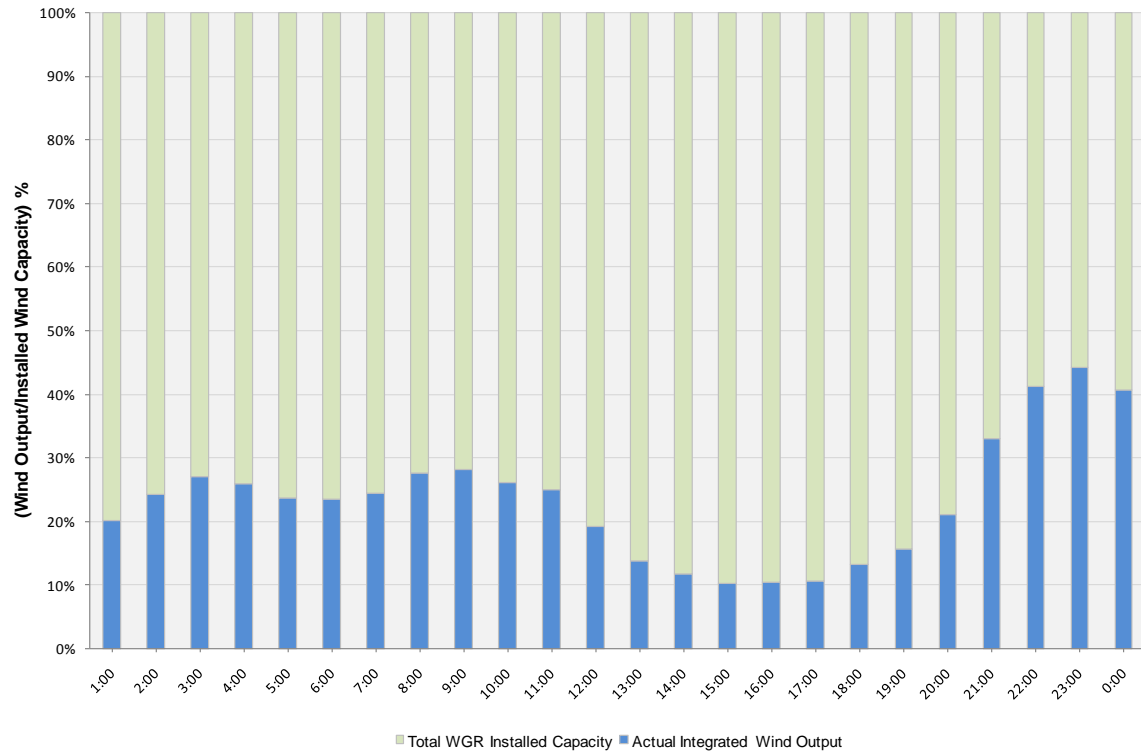
Peak Load	35,493 MW
Load Peak Hour	17
Wind Record 06/12/10	7016 MW
Max Wind value	4324 MW
Wind Peak Hour	22:36:48
Wind Penetration %	14.76

Hourly Average Actual Load vs. Actual Wind Output
10-04-2010

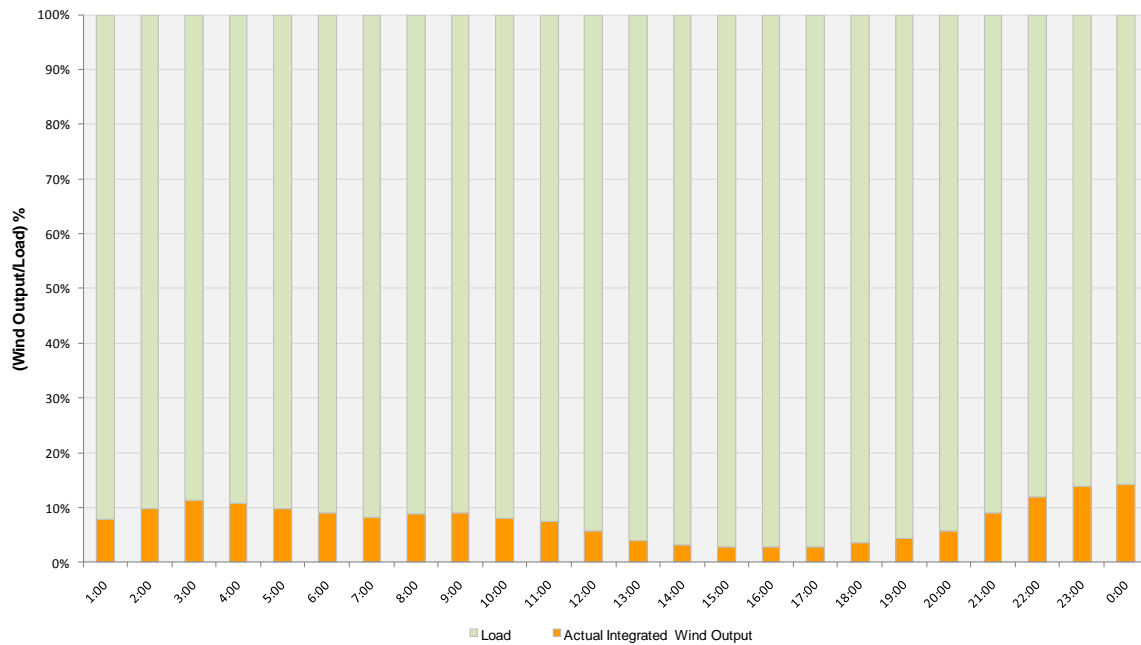




Actual Wind Output as a Percentage of the Total Installed Wind Capacity
10-04-2010



Actual Wind Output as a Percentage of the ERCOT Load
10-04-2010





ERCOT Load vs. Actual Wind Output 09/27/10 - 10/04/10

